

Commissioned by the Omiya City (Japan) Community Band to commemorate the 80th birthday of Toshio Akiyama, a master of the band world.

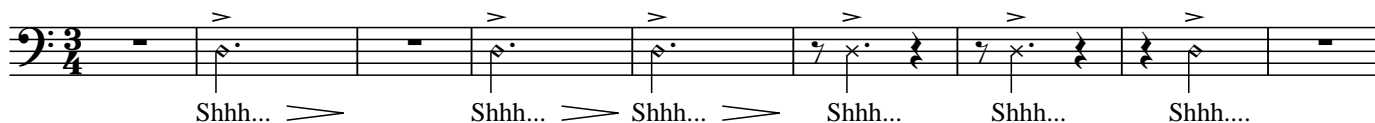
SENSEI'S RIDE ON THE CHERRY BLOSSOM EXPRESS

2nd B \flat Trombone B.C.

Robert W. Smith
(ASCAP)

SL-D51 Train ($\text{♩} = 84$)

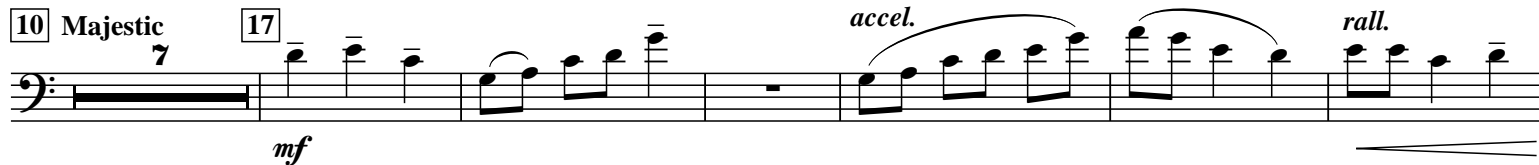
012-3960-00



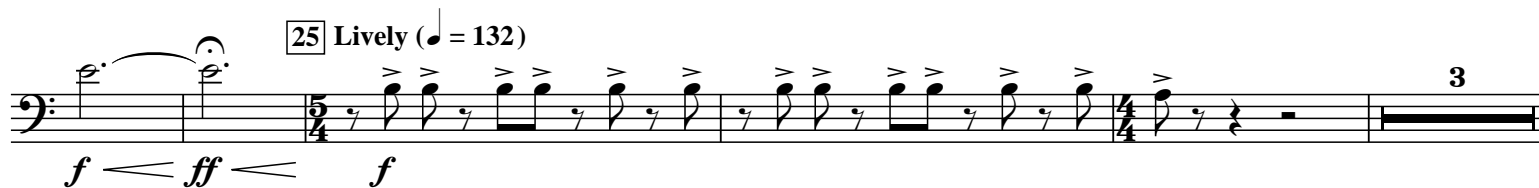
[10] Majestic

7

[17]



[25] Lively ($\text{♩} = 132$)



[31]

16

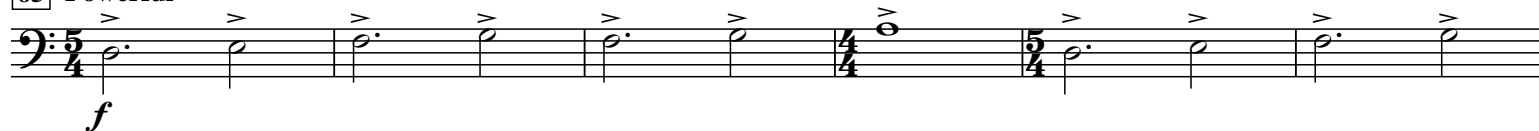
[47]

2

[49]



[65] Powerful



© 2010 Birch Island Music Press (ASCAP), P.O. Box 680, Oskaloosa, IA 52577, USA

International Copyright Secured. All Rights reserved. Printed in U.S.A.

WARNING! This composition is protected by copyright law. To copy or reproduce it by any means is an infringement of the copyright law.

2nd B♭ Trombone B.C.

73

mf *f* *mf* *f* *mf* *f* *mp* *ff*

86 88 96 104 112

2 8 8 8 2

120

mf *mf*

*(6th pos.)

f *mf* *mf*

ff

134 Building (♩ = 132) *accel.*

ff *mf* *sfz*

143 Powerful (♩ = 152) *rall.*

ff *sfz*